

## For Official Use Only

Login ID: \_\_\_\_\_

Password: \_\_\_\_\_

Students are required to produce original current semester paid fee challan form and University ID card before the issuance of Login ID & Password.

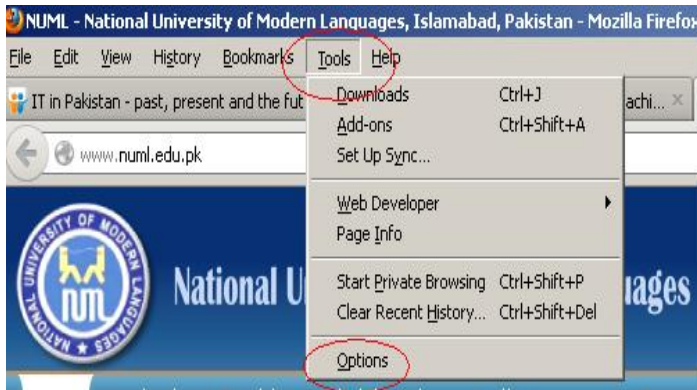
# Off-Campus Digital Library Resource Access Configuration Cheat-Sheet

## Configuration on Mozilla Firefox.

Followings are the step by step instructions.

### Instructions

1. Open the Mozilla Firefox
2. Click on **“Tools”** Menu
3. Go to **“Options”** Sub-Menu



4. click on **“Advanced”** button and
5. Then click on **“Network”** Tab
6. click on **“Settings”** Button



7. Check **“Manual Proxy Configuration”**
8. write HTTP Proxy: **“diglib-proxy.numl.edu.pk”**
9. port : **“8088”**
10. Then click **“OK”** Button

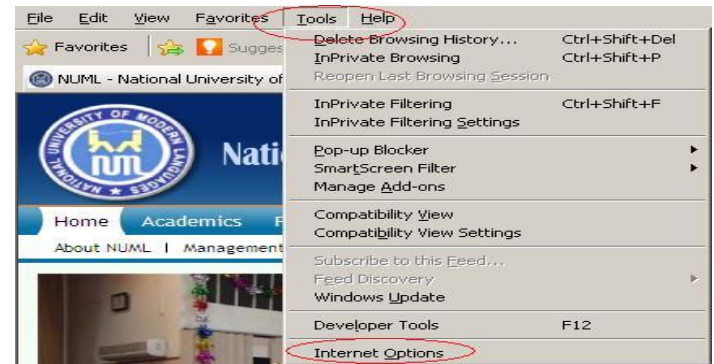


## Proxy Configuration on Internet Explorer.

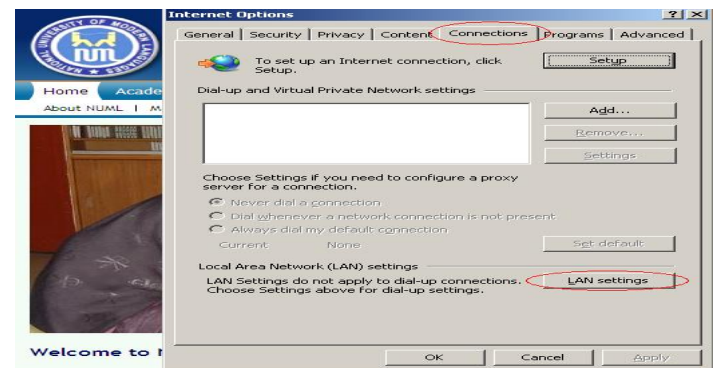
Followings are the step by step instructions.

### Instructions

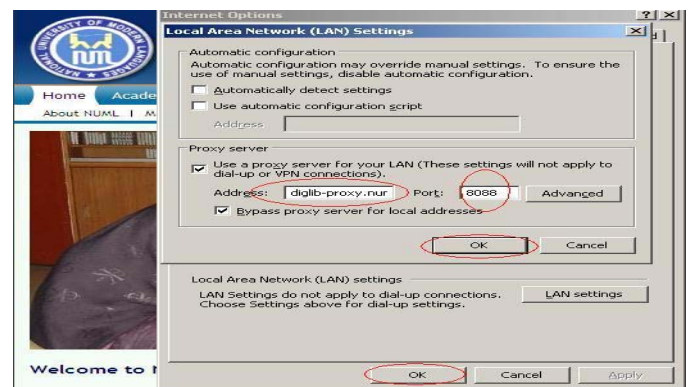
1. Open the Internet explorer
2. Click on **“Tools”** Menu
3. Go to **“Internet Options”** Sub-Menu



4. click on **“Connections”** Tab
5. click on **“LAN Settings”** Button



6. Check **“Use a Proxy Server for your LAN”** Settings
7. write Address: **“diglib-proxy.numl.edu.pk”**
8. port : **“8088”**
9. Then click **“OK”** Button



You are further requested to have your login ID and Password obtained from Server Room (Salam Block), NUML, Islamabad OR e-mail to: [sys@numl.edu.pk](mailto:sys@numl.edu.pk) for further assistance.

For Information: Digital Library Resource URL is <http://www.digitallibrary.edu.pk/numl.html>